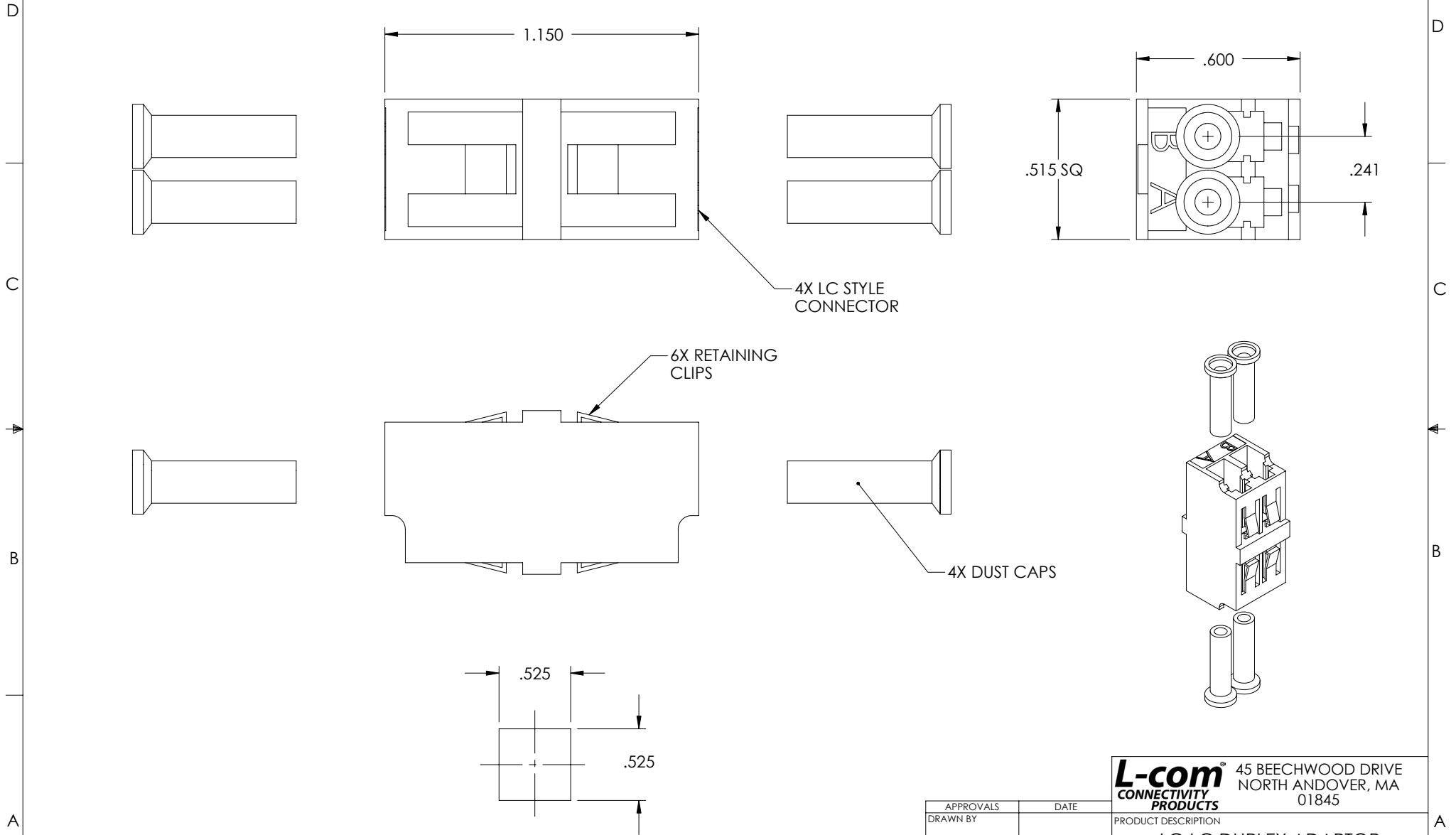


THE INFORMATION CONTAINED IN THIS DRAWING IS THE SOLE PROPERTY OF L-COM, INC. ANY REPRODUCTION IN PART OR WHOLE WITHOUT THE WRITTEN PERMISSION OF L-COM, INC. IS PROHIBITED.

REVISIONS			
REV	DESCRIPTION	DATE	APPROVED
A	RELEASED FOR PRODUCTION	12/28/00	MCCORMICK
B	REVISED:ADDED PANEL OPENING	08/16/02	MCCORMICK
.	.	.	.
.	.	.	.



NOTES:
 1. MATERIAL:
 1.1 BODY: PLASTIC
 1.2 ALIGNMENT SLEEVE: CERAMIC

RECOMMENDED
 PANEL OPENING

UNLESS OTHERWISE SPECIFIED,
 DIMENSIONS ARE IN INCHES
 TOLERANCES ARE:
 .X ±.1
 .XX ±.05
 .XXX ±.005
 CABLE LENGTH TOLERANCE
 <300" ±5% >300" ±2%

APPROVALS	DATE
DRAWN BY C.McCORMICK	12/28/00
CHECKED BY D.FP	01/10/01
APPROVED BY R.CARRICK	01/10/01

CONFIGURATION DETAILS OF
 UNDIMENSIONED FEATURES
 MAY VARY

L-com[®] 45 BEECHWOOD DRIVE
 CONNECTIVITY PRODUCTS NORTH ANDOVER, MA
 01845

PRODUCT DESCRIPTION
LC-LC DUPLEX ADAPTOR

DRAWING TITLE
OUTLINE DRAWING

SIZE	FSCM NO.	DWG. NO.	REV.
A	43321	FOA-550A-OD1	B
SCALE 1:2	CAD FILE: FOA-550A-OD1.SLDDRW	SHEET 1 OF 1	